

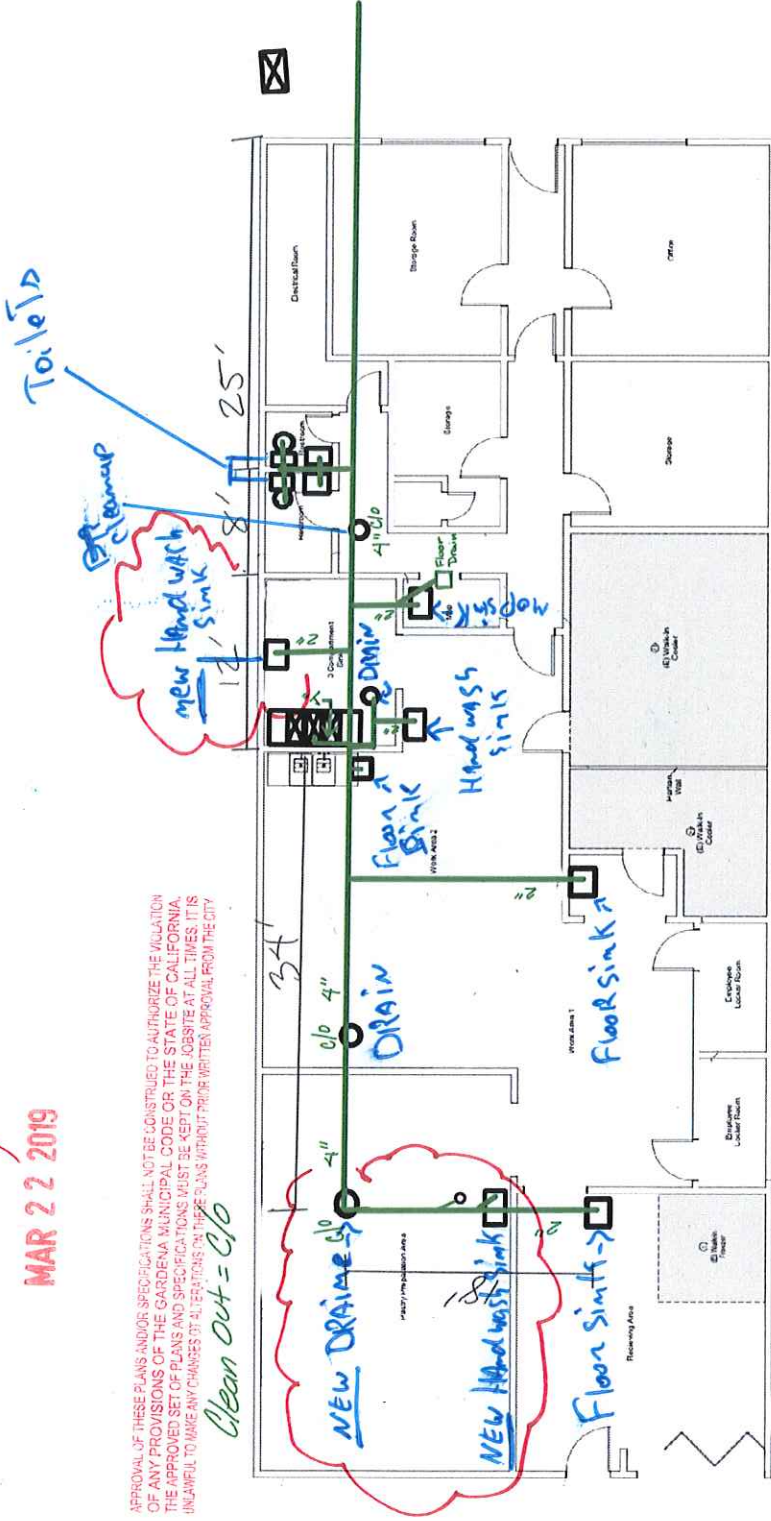
CITY OF GARDENA - COMMUNITY DEVELOPMENT DEPT.
BUILDING DIVISION
PURSUANT TO TITLE 16, GARDENA BUILDINGS AND CONSTRUCTION REGULATION

APPROVED BY:

MAR 22 2019

APPROVAL OF THESE PLANS AND/OR SPECIFICATIONS SHALL NOT BE CONSTRUED TO AUTHORIZE THE VIOLATION OF ANY PROVISIONS OF THE GARDENA MUNICIPAL CODE OR THE STATE OF CALIFORNIA. THE APPROVED SET OF PLANS AND SPECIFICATIONS MUST BE KEPT ON THE JOB SITE AT ALL TIMES. IT IS UNLAWFUL TO MAKE ANY CHANGES OR ALTERATIONS ON THESE PLANS WITHOUT PRIOR WRITTEN APPROVAL FROM THE CITY.

Clean Out = C/O



12923 BUDLONG AVE. PLUMBING OFFICE 60019-0112

CITY OF GARDENA - COMMUNITY DEVELOPMENT DEPT.
 BUILDING DIVISION
 PURSUANT TO TITLE 16, GARDENA BUILDING AND CONSTRUCTION REGULATION
 APPROVED BY: *[Signature]*

MAR 22 2019

As per golden state water @ (800) 999-4036 High 150' column
 YOUR SPECIFICATIONS SHALL NOT BE CONSIDERED TO AUTHORIZE THE VIOLATION
 OF ANY PROVISIONS OF THE GARDENA MUNICIPAL CODE OR THE STATE OF CALIFORNIA
 THE APPROVED SET OF PLANS SHALL BE KEPT ON THE JOB SITE AT ALL TIMES. IT IS
 UNLAWFUL TO MAKE ANY CHANGES OR ALTERATIONS ON THESE PLANS WITHOUT PRIOR WRITTEN APPROVAL FROM THE CITY

T.O.L. = 146
 Total F.U. = 19.5
 150' column
 1/2" = 5fu
 3/4" = 17fu
 1" = 35fu

