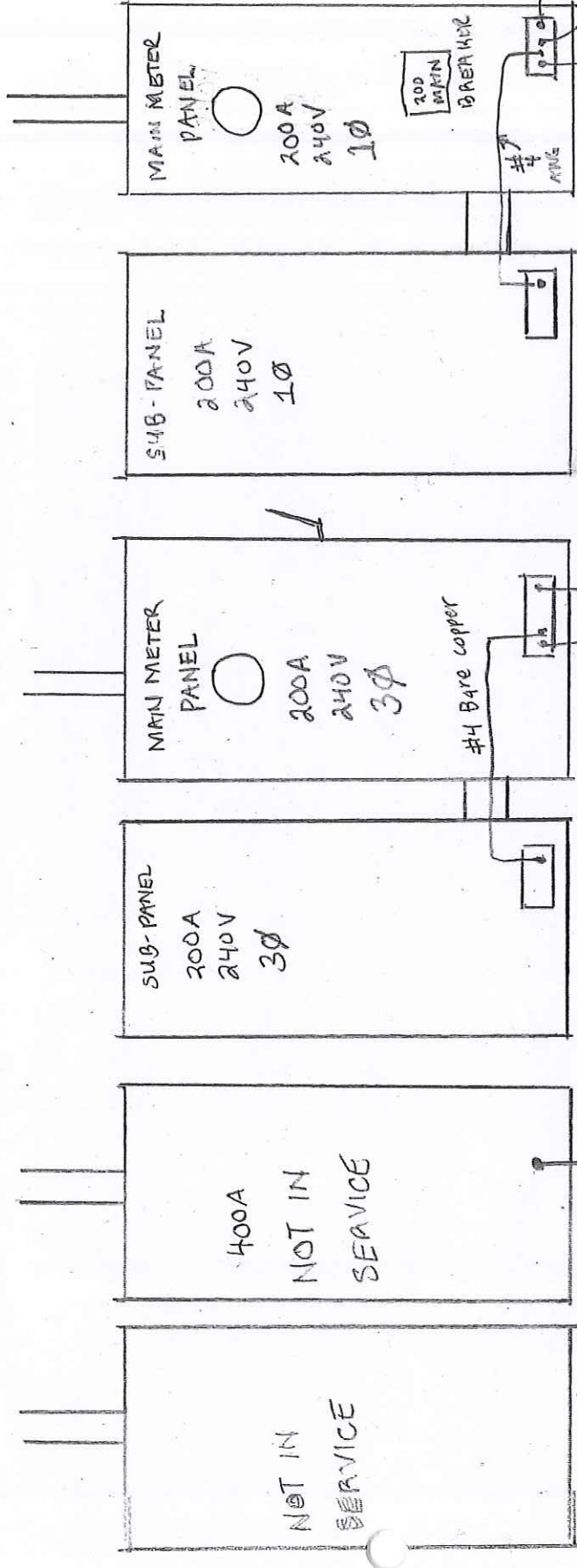


HALLAB PASTRY 12923 SOUTH BUDLONG AVE GARDENA, CA 90247



**REVISION**

Existing #6 armored cable bonded to the wall rebar in the wall.

NEW #4 Armored cable # ground existing steel conduit bonded to the cold water pipe

COPPER COLD WATER PIPE

EXISTING STEEL CONDUIT BONDED TO COLD WATER PIPE

COPPER COLD WATER PIPE

NEW #4 ARMORED GROUND CABLE

#4 ARMORED GROUND

CITY OF GARDENA - COMMUNITY DEVELOPMENT DEPT.  
 BUILDING DIVISION  
 PURSUANT TO TITLE 16, GARDENA BUILDING AND CONSTRUCTION REGULATION

APPROVED BY:

FEB 1 2019

APPROVAL OF THESE PLANS AND/OR SPECIFICATIONS SHALL NOT BE CONSTRUED TO AUTHORIZE THE VIOLATION OF ANY PROVISIONS OF THE GARDENA MUNICIPAL CODE OR THE STATE OF CALIFORNIA. THE APPROVED SET OF PLANS AND SPECIFICATIONS MUST BE KEPT ON THE JOB SITE AT ALL TIMES. IT IS UNLAWFUL TO MAKE ANY CHANGES TO ANY PART OF THESE PLANS WITHOUT THE WRITTEN APPROVAL FROM THE CITY.

10' x 5 1/8" COPPER GROUND ROD

10' x 5 1/8" COPPER GROUND ROD

10' x 5 1/8" COPPER GROUND ROD

12923 Budlong

700P-0024